

UNITED STATES PUBLIC LAND SURVEY CORNER CERTIFICATE FOR

Land survey monuments situated in Section 33, Township 106 North, Range 41 West, of the Fifth Principal Meridian, Murray County, Minnesota..

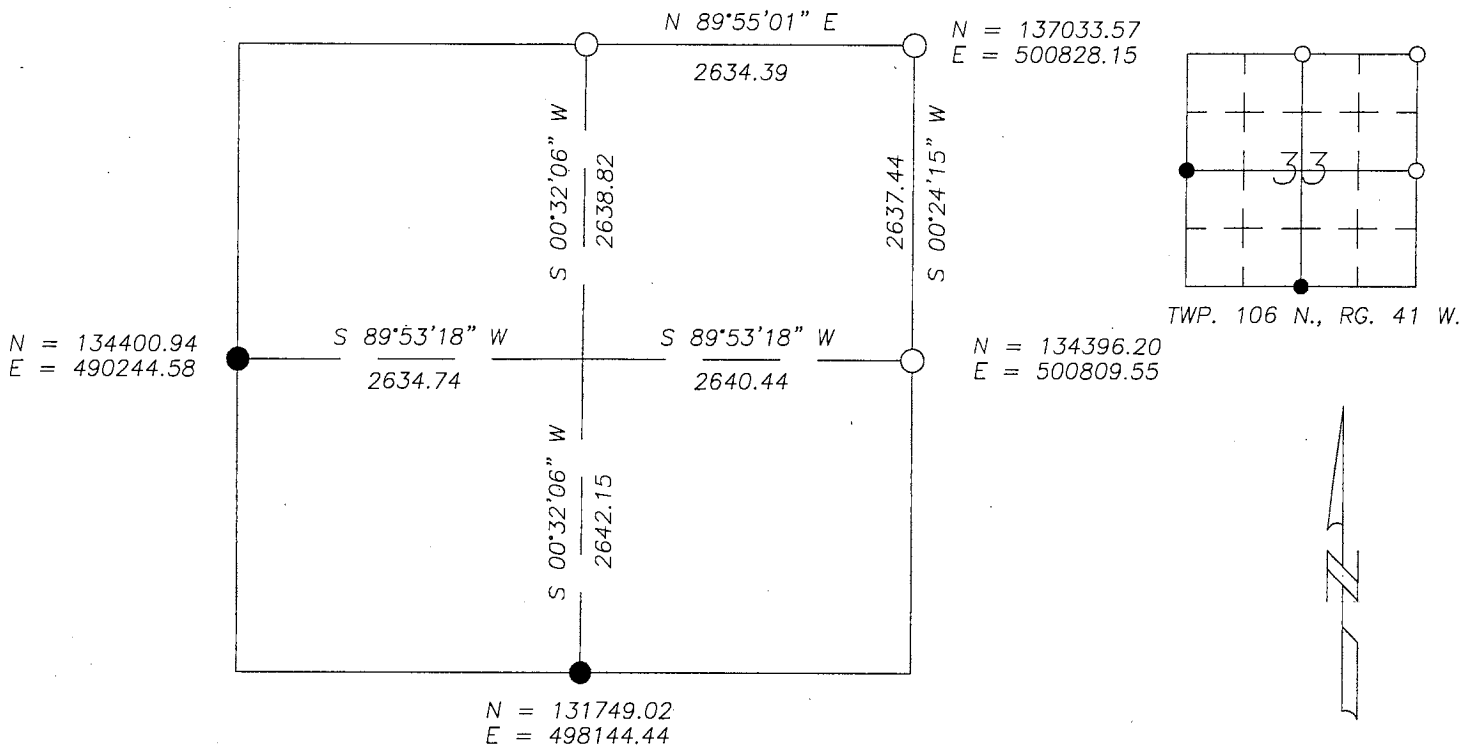
Previously recorded in N/A in County Recorder's Office.

(Show reason for preparing this certificate, the evidence and detailed procedure used in establishing the corner position & monumentation found or placed.)

MONUMENT DESCRIPTION AND REMARKS: On April 4, 2012 we dug with backhoe for North 1/4 corner & found a wooden hub 2.5' deep in line with fence to south. Accepted hub as corner & placed 5/8" Iron stake with survey cap 23008. County Highway records show no information or evidence of corner. We dug for NE corner & found no evidence of corner. Placed 5/8" Iron stake with survey cap 23008 at centerline of road intersection. County Highway records show no information or evidence of corner. We dug for East 1/4 Corner & found a 11" X 7" stone 3.7' below surface at Township Road centerline in line with occupation West. Placed 5/8" Iron stake with survey cap 23008 over top center of stone as accepted corner. County Highway records show no information or evidence of corner.

MURRAY COUNTY COORDINATES NAD-82 (2007) **PLAN-VIEW**

N = 137029.76
E = 498193.76



I hereby certify that this land surveying document was prepared and related survey work was performed by me or under my direct supervision and that I am a duly licensed Land Surveyor under the laws of the State of Minnesota.

Perry L. Zieske 4-13-12
Signature Date
Perry Zieske
License number 23008

Corners to be Indexed

Corners	Section	Township	Range
N 1/4	33	106	41
NE	33	106	41
E 1/4	33	106	41